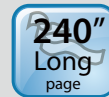
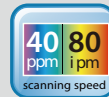




A Compact and Affordable Duplex Scanner



Features:

- AD340GWN scans 40 ppm/80 ipm (at A4, Color, 300 dpi)
- Easy to carry due to the slim design
- Support embossed plastic cards
- Ultrasonic multi-feed detection
- Professional bundled software applications include Avison Button Manager V2, AVScan X, PaperPort SE 14
- Earth-friendly LED technology
- Compact ADF holds up to 50 pages
- Press and scan to cloud servers such as Google Drive, FTP, Evernote, and Microsoft SharePoint via Button Manager V2
- Latest USB3.2 Gen 1x1 connectivity for faster transmission speed
- Scanning and sending images to a USB flash drive

Overview

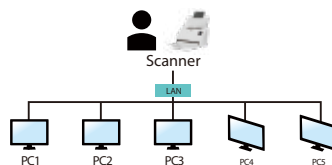
The AD340GWN is a 40 ppm/ 80 ipm, duplex sheetfed scanner that is fast, reliable, and affordable for business where scanning plastic ID cards, business cards, documents or other heavy card stock is necessary. Embedded with Avison-developed image processor, the scanned image can be automatically cropped, straightened, and optimized with enhanced speed.

Convenient mobile scanning

Built-in with a Wi-Fi dongle, the AD340GWN can work as a wireless device to scan and receive images directly from your mobile devices .

A wired network scanner

After connecting to the LAN through the ethernet cable, install Avison's Network setup tool - Virtual Scanner Link software to find and connect the scanner on the LAN. Then you can start a scan either from your computer directly on the scanner's button. What is best, the network scanner allows you to switch to other computers in the LAN, users in the LAN can really enjoy the scan and collect the image on their own computers!

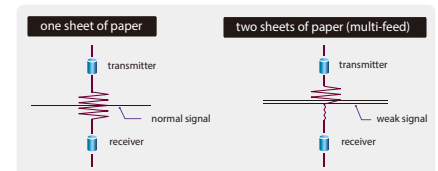


Convenient walk-up scanning

A USB direct interface is available for scanning files to your USB flash memory drive.

Ultrasonic multi-feed detection

With the built-in ultrasonic multi-feed detection capability, the scanner allows you to set overlapped paper by detecting papertickness between document. When multi-feed is detected a warning message will be prompted.



Color, and graphical LCD display

The AD340GWN is easy to use through the LCD display and buttons on the panel. By selecting your destination and pressing the "Scan" button, the scan can be done and the scanned image can be sent to your specified destination application such as e-mail, printer, or your favorable image-editing software application. Up to nine frequently used scan settings and destinations can be preset for different scanning needs.



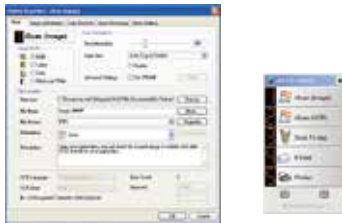
What we have bundled

The AD340GWN comes with TWAIN and ISIS drivers, and are bundled with a suite of powerful software applications that include Avison Button Manager V2, AVScan X, Nuance PaperPort SE 14 and Virtual Scanner Link .

Avision | AD340GWN Sheetfed Scanner

Avision's Button Manager V2

-Completes your scan with a single step



The Button Manager V2 main screen

Button Manager V2 makes it easy for you to scan and send your image to your favorite destinations with a press one button. Now the new version comes with an innovative feature to let you scan and automatically upload the scanned document to popular cloud repositories such as Google Docs, Microsoft SharePoint, or FTP. In addition, the iScan feature allows you to insert the scanned image or recognized text after optional OCR (Optical Character Recognition) process to your text editor such as Microsoft Word to get your job done easily and quickly.

AVScan X

-The Intelligent Document Management Tool



The AVScan X main screen

Document Imaging is the very first step of Document Management. However, poor quality images can cause serious problems to later indexing or storing processes. It may increase scanning labor costs and lowers the OCR accuracy. AVScan X ensures all documents are checked and polished at the time they are scanned such that the image quality is guaranteed before they are ready to use for other purposes.

AVScan X is an intelligent scanning and electronic filing solution. AVScan X possesses distinct features that convert and index scanned information into electronic documents for easy storage and fast retrieval.

Nuance PaperPort SE14

- The Professional Choice to Organize and Share Your Documents



The PaperPort SE14 main screen

PaperPort SE 14 is Nuance's most popular scanning and document management solution, carefully designed specifically for home office use. Part traditional file cabinet, part digital-document desktop, PaperPort SE 14 is the fastest and easiest way to scan, share, search and organize your documents. Additionally, PaperPort SE 14 now delivers anytime-anywhere access to your most important files however it's convenient for you - using a PC, Mac, iPhone, iPad, or Android device.



PAPERPORT SE 14



Avision
Button Manager V2

AVScan X



Avision AD340GWN Product Specifications

Paper Feeding:	ADF 50-page capacity
Scanning Technology:	Contact Image Sensor (CIS)
Light Source:	LED
ID card thickness:	Up to 1.25 mm
Long Page Mode:	200 dpi: 6096 mm (240 in.) 300 dpi: 5540 mm (218 in.) 600 dpi: 1500 mm (59 in.)
Scanning Size:	Max. 216 x 356 mm (Legal) (8.5 x 14 in) Min. 74 x 52 mm (2.9 x 2.0 in)
Scanning Speed:	40 PPM/80 IPM (color, A4, 300 dpi)
Paper Thickness:	27~ 413 g/m ² (7 ~ 110 lb.)
Optical Resolution:	600 dpi
Output Resolution:	75, 100, 150, 200, 300, 400 , 600, 1200 dpi
Halftone Patterns:	Dither and Error Diffusion
Grayscale mode:	16-bit input 8-bit output
Color mode:	48-bit input 24-bit output
File Formats:	BMP, PNG, GIF, JPEG, PDF, Searchable PDF Multi-Page TIFF, TIFF, RTF, TXT, XPS, DOC, XLS, PPT, DOCX, XLSX, PPTX, HTML.
Bundled Software:	Avision Button Manager V2, Avision AVScan X Nuance PaperPort SE 14, Virtual Scanner Link
Interface/Drivers:	USB3.2 Gen 1x1 /USB 2.0 (Scan to Flash)/Ethernet
Power Supply:	Input: 100~240 VAC, 50/60 Hz Output: 24V, 1.5A
Power Consumption:	Operation: 17W Sleep: 1.9 W Ready: 6W Off: 0.2W
Environmental Factors:	Operating temperature: 10°C to 35°C (50°F to 95°F) Operating humidity: 10% to 85%
Acoustic Noise:	Standby: <25 dB Operating: <55 dB
Maximum (WxDxH):	282 x 457 x 334 mm
Minimum (WxDxH):	282 x 152 x 165 mm
Weight:	2.5 kg
Recommended Daily Duty Cycle:	8,000 Sheets
Multi-feed Detection:	Ultrasonic Sensor

Specifications subject to change without notice.

System Requirements

CPU:	Intel Core i3 (2.1GHz) or Higher
Memory:	2GB (32bit Windows) 4GB (64bit Windows)
DVD-ROM:	DVD ROM Drive
USB:	USB3.2 Gen 1x1
Windows Operating System:	Windows 10, 8.x, 7, SP3(32 & 64 bit)

Contents

Scanner
Power Supply
Quick Guide
USB3.2 Gen 1x1 Cable
CD-ROM includes:
-Scanner Driver (TWAIN/ISIS Driver)
-Avision Button Manager V2
-Avision AVScan X
-Nuance PaperPort SE 14
-Virtual Scanner Link

We have endeavored to ensure that this information is accurate. In this regard, Avision is not responsible for printing or typographical errors. The above configuration is for reference only. Avision reserves the right to change the product design and specifications without notice. Avision Inc. owns the intellectual property rights of the product and design and the product name and design are subject to change. Avision reserves the right to the interpretation of the product description. Avision, Inc. All rights reserved. Other company and product names mentioned in this document are trademarks of their respective companies. Wherein the third party product is for reference only and Avision does not warrant these products nor is responsible for the efficiency or use of these products.



Avision
www.avision.com